

SR 530 SLIDE

MISSION # 14-0995

WA-SNX - 000001

050, WASHINGTON



**INCIDENT ACTION PLAN (redacted
for web posting by RBIM LLC
phone numbers removed)**

SUNDAY - MARCH 30, 2014

ALL SHIFTS

DNR 224SA

F#6001 A

INCIDENT OBJECTIVES	1. Incident Name SR530 Slide - #14-0995	2. Date March 29, 2014	3. Time 1650
4. Operational Period March 30, 2014 All Shifts			
5. General Control Objectives for the Incident (include alternatives) Provide for the safety and health of all deployed personnel. Conduct rescue operations. Maintain interoperable communications. Continue recovery operations with dignity and respect provided to recovered loved ones. Provide updates for financial record keeping. Document search and recovery effort. Provide support to the JIC as requested.			
6. Weather Forecast for Period See attached Weather Report Tides: (Stillaguamish River at Stanwood) Low 0109 @ 0.4 feet High 0533 @ 7.4 feet Low 1345 @ 0.3 feet High 1807 @ 6.9 feet			
7. General Safety Message Wear appropriate Personal Protective Equipment (PPE) as required by your agency. Volunteers must have a minimum of helmet, gloves, eye protection, and high visibility vests as available and provided. Avoid cross-contamination. Decontaminate all personnel and equipment when exiting the hazard area and prior to entering vehicles Maintain situation awareness. <ul style="list-style-type: none"> • Know current and anticipated weather. • Monitor personnel for cold / heat exposures. • Be aware of aircraft and heavy equipment. • Monitor the pile for changes in working conditions and hazards within void spaces. • Be aware of hazardous materials. Do not move until assessed. • Remember LCES - Lookouts, Communications, Escape Routes, and Safety Zones. Personnel should be removed from immediate area during all helicopter hoist operations.			
a. Attachments (mark attached)			
[83] Organization List - ICS 203	[83] Medical Plan - ICS 206	<input type="radio"/> (Other)	
[83] Div. Assignment Lists - ICS 204	[83] Incident Map	<input type="radio"/>	
[83] Communications Plan - ICS 205	[83] Traffic Plan	<input type="radio"/>	
9. Prepared by (Planning Section Chief) L >	10. Approved (Incident Commander) e-----/		L. rc) "cke,

ORGANIZATION ASSIGNMENT LIST	
1. Incident Name SR 530 Slide - #14-0995	
2. Date March 29, 2014	3. Time 2000
4. Operational Period March 30, 2014 All Shifts	
5. Incident Commander and Staff	
Incident Commander	Larry Nickey / Pat Halford (t)
Deputy	Brian Gales
ESF9	Ted Pete!
IST Leader	Tom Miner
Deputy - Leader - IST	Mike Boyle
Safety Officer	Ray Hershey
Safety IST	Jim Colston
Safety Officer (West)	Christian Dimonda
Public Information Officer	Cynthia Bork / Kari Lee (ST)
Liaison Dept. of Ecology	Carl Anderson
Liaison Family Assistance - IST	Anita Arnum
Medical Officer - IST	Larry Woodard
6. Agency Representative	
Arlington Fire Department	Bruce Stedman (DOCS)
OSO Fire Department	Willie Harper
Darrington Fire Department	Dennis Fenstermaker
Arlington Public Works	Paul Ellis
WA State Dept. of Transportation	Gary Ward
Snohomish Co. Public Works	Steve Thomson
Washington State Patrol	Jeff Sass
Snohomish County Sheriff Office	Ty Trenary
Liaison (DEM)	Jason Bierman
Dept. Natural Resources	Jay Guthrie / Travis Miranda
WA State Aeronautics	Tom Peterson
7. Planning Section	
Chief	Darrin Henderson
Chief - IST	Dan Hudson
Deputy - IST	Mike Finnerty
Resources Unit	Marilyn Coleman / LeMay (t)
Demobilization Unit	Laura Backlund
Status Check In	Meredith Butcher
Situation Unit	Steve Fraidenburg / Ellis (t)
Situation Unit - IST	Ed Bushman
GIS Specialist	Carol Smith
Training Specialist	Roxanne Hershey
CTSP	David Johnson
Structure Spec - IST	Fred Nelson
Hazmat Spec. - IST	Pat Carlisle
8. Logistics Section	
Chief	Jim Hammer / Pete Selvig
Chief - IMT	Craig White
Deputy Chief - IST	Rick McKinney
COML	Dick Whitaker
COML - IST	Mike Worrell
Deputy COML - IST	Billy Freeman
Ordering Manager - T	Rob Jeter
Ground Support - IST	John Wood
Food Unit Leader	Patricia Young

PONMOB Spec - IST	Steve Dohman	
NCM	Gndy Preston	
Ground Support	Dave Hesbum	
EQPM - t	Justin Gardner	
Medical Unit Leader	Bryan Swanberg	
Medical Unit Leader - IST	Richard Bradley	
0 . ""rtir,n		
Chief (East)	Mike Asher / Dave Nalle - t	
Chief (Planning)	Karrie Stevens	
Chief (West)	Karrie Stevens / Shane Theall - t	
Chief - IST	Mike Johnson	
Deputy Chief - IST	Harry Muns	
Chief - T	Steve Westlake	
Chief - T	Ken LeMay	
US&R Specialist - IST	John Bentley	
US&R Specialist - IST	Les Crews	
a. Branch Law Enforcement		
Branch Director	Sgt. Palmer / Lt. AJ Bryant (night)	
Division/Group	SECURITY (East)	Sgt. McLaughlin
	SECURITY (West)	Sgt. Dave Bleau
Division/Group	TRAFFIC	Lt. Swainson / Sgt. Rudeen
b. Division West		
Division Group Sup	Steve Mason / Mike Moore	
Group A/B	Doug Bleeker	
FEMA Liaison	Les Crews	
c. Division East		
Division Group Sup	Steve Harris / Richard Parrish	
Group CID		
Search Group	Frank/Pressel	
d. Branch Road		
Branch Director	Dean Warner	
Division/Group	HY530	Gary Ward
Division/Group	Service Road	
Division/Group	Debris	
e. Branch Engineering		
Branch Director	Steve Thompson	
Deputy	Owen Carter	
f. Air Operations Branch		
Air Operations Branch Director	Tom Griffith	
Air Tactical Group Supervisor	Ellis	
10. Finance Section		
Chief	John Freerksen	
FEMA Contracting OFC - IST	Doug Porter	
Cost		
Cost - T	Mandie Willenberg	
Time Unit Leader	Krissy Mchell	
COMP/Claims - T	Margaret Logue	
Equipment Time Recorder	Bob Gavenas / Carolyn Hudson - t	
Procurement	Deborah Ross	
WSP	Ester Hernandez / Barbie Maer	
Prepared by (Resource Unit Leader) Marilyn Coleman		



INCIDENT Weather Forecast

FORECAST NO: 1

NAME OF INCIDENT: Oso Landslide Response

PREDICTION FOR: Sunday DAY Shift

UNIT: Snohomish County DEM

SHIFT DATE: March 30, 2014

SIGNED: *Andy Haner*

TIME AND DATE

Incident Meteorologist

FORECAST ISSUED: 03/29/2014 at 1700 PDT

WEATHER DISCUSSION: An upper level low pressure trough will weaken over western Washington on Sunday. On Sunday night and Monday, a weak upper level high pressure ridge will develop. This change in the weather pattern will cause showers to diminish on Sunday evening, with a solidly dry day on Monday.

WEATHER FORECAST:

sundw:

Weather Occasional showers. Cloudy with just a few glimpses of sun in the afternoon.
Chance of Rain 100%
Rainfall Amount 0.40"
High Temperature 50
Wind (Valley Bottom) ... Light Wind.

sundw Niht:

Weather Mostly cloudy in the evening with scattered showers. Becoming clear overnight.
Chance of Rain 40% (mainly in the evening)
Rainfall Amount 0.05"
Low Temperature 33
Wind (Valley Bottom) ... Light Wind.

Outlook for Monday:

Sky / Weather A few wisps of fog in the valley bottom around sunrise, otherwise Mostly Sunny.
Chance of Rain 10%
Rainfall Amount None
High Temperature 58
Wind (Valley Bottom) ... Light Wind in the morning, becoming East 5-10 mph in the afternoon.

EXTENDED OUTLOOK for Tuesday and Wednesday:

Upper level high pressure will prevail over the slide area on Tuesday, giving another day of rain-free weather and mostly sunny skies.
.Tuesday ... Mostly Sunny. Low near 35. Highs near 61. Light east wind in the morning, then a light west wind in the afternoon.
.Wednesday ... Partly cloudy during the day, then mostly cloudy with a chance of rain in the evening. Low near 38. Highs near 57. East wind 5 to 10 mph.

Aviation Weather, valid from 0900 to 1900 PDT on Sunday, March 30:

Occasional Showers with Broken-Overcast ceilings.

Prevailing ceilings: Near 1000 feet msl in the morning, rising to 3500 feet msl in the afternoon.

Visibility: Good visibility outside of showers. Occasional visibility of 1-2 statute miles in showers.

Wind: Light Wind in the valley bottom. At 3000 feet msl, southwest wind 15-20 knots in the morning, easing to 10-15 knots late in the period.

SAFETY MESSAGE/PLAN (ICS 208)

1. Incident Name: 530 Slide-#14-0995	2. Operational Period: Date From: 3/30/14 Time From: 0600	Date To: 3/31/14 Time To: 0600
---	--	-----------------------------------

3. Safety Message/Expanded Safety Message, Safety Plan, Site Safety Plan:

Remember: No Smoking in the Hazard Area, staging areas or in incident management structures

Avoid Cross-contamination:

- Decontaminate all personnel and equipment when exiting the hazard area and prior to entering vehicles
- Hand washing and other hygiene measures required especially before eating!

Maintain situation awareness.

- Know current and anticipated weather
- Monitor personnel for cold / heat exposures
- Monitor the debris field for changes in working conditions and hazards within void spaces
- Be aware of hazardous materials. Do not move and follow hazmat plan.
- Use caution around heavy equipment. Safety spotter required in work areas and pedestrian access.
- No personnel allowed under aircraft working on extractions

Wear appropriate Personal Protective Equipment (PPE) as required by your agency. Volunteers must have a minimum of helmet, gloves, eye protection, and high visibility vests as available and provided.

Monitor personnel for fatigue and exposures to the elements. Ensure appropriate work / rest cycles are observed.

Dehydration is 100% avoidable. Keep personnel hydrated by consuming water frequently.

Drive defensively on local roads and within the operational area.

- Roadways may still be compromised
- Increased public and commercial traffic on local roads
- Staging areas in the East and West Branch are congested. Be aware of vehicles and pedestrians

Maintain constant communications and accountability. Ensure check-in/check-out procedures are followed.

Follow agency policies and procedures for water operations. All rescuers within 10 feet of the water should wear the appropriate PPE.

Remember to report all injuries, illnesses and accidents to your immediate supervisor, incident medical and safety.

Emergency Evacuation for Responders

There may be times when personnel need to *Withdraw* (orderly withdrawal from hazard area with tools) from their work area. These actions will be directed by the crew leader.

The *Abandon* signal (3 bng blasts on the air horn) will indicate the need for immediate evacuation of emergency personnel to their safety zones. This will be followed by radio communications and accountability reports.

Practice LCES - Lookouts, Communications, Escape Routes, and Safety Zones

4. ~~Is~~ Safety Plan Required? Yes No
Approved Site Safety Plan(s) Located At:

5. Prepared by: Name Ray Hershey Position/Title: IMT Safety Officer Signature 

ICS-21SA Safety Analysis

Incident:
SR 530 Slide 03/30/14

Identification of Hazards, Probability, Severity, and Risk Assessment

Mission Objective(s):
See ICS 202 form

Existing Conditions				Division/Group Branch - Location							Mitigation Actions Proposed	Post-mitigation					
Tactical Hazards	Likelihood	Severity	Risk Level	W	E	S						Likelihood	Severity	Risk Level	Is Risk Necessary	Is Risk Acceptable?	
Entering damaged structures and voids for search/recovery operations	Remote	Critical	Medium	X	X	X						Utilize probes, atmospheric monitors or rescue trained entrants	Improbable	Critical	Medium	Yes	Yes
Standing or moving water or standing water operations	Occasional	Catastrophic	Medium	X	X	X						Utilize appropriate PPE for water operations. PFD's required within 10' of water banks.	Remote	Catastrophic	High	Yes	Yes
Falling rocks, debris, and mudslides impacting the debris field	Remote	Marginal to Catastrophic	Med/High	X	X	X						Observe current weather. Maintain awareness of spot forecasts and predicted weather. Monitor soils within the release area. Ensure LCES.	Improbable	Marginal to Catastrophic	LOW TO MEDIUM	Yes	Yes
Fatigue/dehydration	Probable	Critical	Medium	X	X	X						Monitor behaviors, utilize direct supervision - frequent hydration	Remote	Critical	MEDIUM	Yes	Yes
Poor hygiene, infections, rashes, and contamination, sickness	Probable	Critical	High	X	X	X						Avoid cross-contamination. Practice good personal hygiene - wash hands frequently and always before eating or handling food. Decontamination after each mission is required.	Remote	Critical	MEDIUM	Yes	Yes
Exposed or compromised pipes, tanks, containers and vessels	Probable	Critical to Catastrophic	High	X	X	X						Maintain situational awareness for propane, fuel oil and bio-hazards. Identify, isolate, and deny entry of needed. GPS and flag area. Notify on-site hazmat teams. Flammable gasses will migrate to lower areas.	Improbable	Catastrophic	MEDIUM	Yes	Yes
Flooded areas, damaged or undermined roads	Probable	Catastrophic	Medium	X	X	X						Evaluate roadways - don't drive into flooded or damaged roads without proper assessment, drive	Improbable	catastrophic	MEDIUM	Yes	Yes
Mixture of pedestrians with civilian, contractual, and incident traffic around staging, command post, and operational areas	Frequent	Critical	Medium	X	X	X						Pay attention while driving or walking through access/equipment areas, follow traffic plans and safety spotters. Watch for pedestrians and loose roadway materials. Drive defensively, especially on the service road. Back-up spotters are required.	Remote	Critical	MEDIUM	Yes	Yes

Risk Level
Low -Green
Medium -Amber
High -Red

Likelihood/Probability
Frequent - Likely to occur often; continuously experienced
Probable - Will occur several times, will occur often
Occasional - Likely to occur sometime; will occur several times
Remote - Unlikely to occur, but possible; can be reasonably expected
Improbable - Very unlikely, but conceivable

Severity/Consequences
Catastrophic - Results in fatality/fatalities and/or loss of system
Critical - Severe injury and/or major system damage
Marginal - Minor injury and/or minor system damage
Negligible - Less than minor injury and/or less than minor system damage

206H HAZMAT PLAN	1. INCIDENT NAME SR530 Slide	2. DATE PREPARED 3/29/14	3. TIME PREPARED 1800	4. OPERATIONAL PERIOD 3/30/14 0600-0600
-----------------------------	---------------------------------	--------------------------------	-----------------------------	--

5. HAZMAT Associated with the Incident

Type of HAZMAT	LOCATION	Confirmed	
		YES	NO
Petrol Chemicals	Debris Field	X	
Compressed Gas Cylinders	Debris Field	X	
Biohazards	Debris Field	X	
Pesticides / Fertilizers / ORM	Debris Field		X
PCB's	Debris Field		X

6. Narrative

Operational Assumptions.

Chemicals associated with this incident are those normally found in residential areas. The releases of these chemicals may be caused by a combination of the flooding and debris flow. It should be assumed that the debris field and water outflow will be contaminated; the exact contaminants are unknown.

PPE.

Standard PPE with Body Substance Isolation (BSI) precautions if necessary. Rescuers who do not have the appropriate BSI protection should avoid contaminated areas and notify on-site hazmat teams. Hazmat teams will determine the appropriate level of PPE.

Decontamination.

All personnel and equipment within the debris field operational area will be decontaminated in the prior to leaving the operational site. Polyethylene or other similar protection of a vehicle's interior is recommended.

PERSONNEL

1. Personnel will be flushed with a low-pressure water soap solution spray to remove gross amounts of contamination.
2. Personnel will wash their hands with soapy water.
3. Use eye wash stations as needed.

EQUIPMENT

1. All equipment will be flushed with low-pressure water soap solution to remove gross amounts of contamination.

Operational Considerations.

1. Work practices should be designed to minimize contact with the contaminated waters and mud.
2. Areas of operation may require further Hazmat evaluation: if in the opinion of the on-site hazmat personnel, an area with unusually high levels of contamination, e.g. visible material, vessels, or "chemical odors", should not be searched until assessment and mitigation has taken place. Materials / vapors may have been trapped in the debris and could present a hazard when disturbed.
3. Establish Hazmat command, control, and operations in the East and West Branches.
4. Ensure a Hazmat site survey is completed and documented for all operational zones.

Reporting Requirements.

All personnel that encounter Hazmat that require a withdrawal of personnel, or the opinion of the Hazmat personnel is significant enough, will report the following information to appropriate supervisor or authority:

1. Use established reporting and logging systems.
2. Known or suspected type and amount of Hazmat that is involved.

First Aid for Exposure.

Any exposure to a known or suspected Hazmat will be reported to Incident Safety, to include partial or total immersion into the waters.

Demobilization.

As with all work uniforms, BDU's should be washed separate from your normal household clothing. Normal household washing is sufficient.

CS 206H	7. Reviewed by (Saf Ray Hershe)	8. Reviewed by (Saf Ray Hershe)
---------	---------------------------------	---------------------------------

ASSIGNMENT LIST (ICS 204)

1. Incident Name: SR-530 Slide		2. Operational Period: Date From:03.30.14 Date To:03.31.14 Time From:0600 Time To:0600		3. Branch: Law Enforce.
4. Operations Personnel: <u>Name</u> Contact Number(s)				Division: Traffic
Operations Section Chief: Steve Westlake –				Group:
Branch Director: Lt. Ron Palmer –				Staging Area: Oso Loop Road
Division/Group Supervisor: Lt. Jeff Beazizo- 1eF " LVY>SQY.				
5. Resources Assigned:				Reporting Location, Special Equipment and Supplies, Remarks, Notes, Information
Resource Identifier	Leader	<input type="checkbox"/> O <input type="checkbox"/> a..	Contact (e.g., phone, pager, radio frequency, etc.)	
Trooper Israel (#635)	Lt. Jeff Beazizo	1	(phone #s redacted)	
Trooper Holodkov (#811)	Lt. Jeff Beazizo	1		
Trooper Goold (#462)	Lt. Jeff Beazizo	1		
Trooper Gerstmann (#920)	Lt. Jeff Beazizo	1		
6. Work Assignments: Manning A, B SR 530 closure at Oso Loop Rd.				
7. Special Instructions:				
8. Communications (radio and/or phone contact numbers needed for this assignment): Name/Function Primary Contact: indicate cell, Pager, or radio (frequency/system/channel)				
9. Prepared by: Name: Sgt. Chris Caiola Position/Title: <i>RC-5/...</i> Signature: <i>[Signature]</i>				

Assignment List

Purpose. The Assignment List(s) (ICS 204) informs Division and Group supervisors of incident assignments. Once the Command and General Staffs agree to the assignments, the assignment information is given to the appropriate Divisions and Groups.

Preparation. The ICS 204 is normally prepared by the Resources Unit, using guidance from the Incident Objectives (ICS 202), Operational Planning Worksheet (ICS 215), and the Operations Section Chief. It must be approved by the Incident Commander, but may be reviewed and initialed by the Planning Section Chief and Operations Section Chief as well.

Distribution. The ICS 204 is duplicated and attached to the ICS 202 and given to all recipients as part of the Incident Action Plan (IAP). In some cases, assignments may be communicated via radio/telephone/fax. All completed original forms must be given to the Documentation Unit.

Notes:

- The ICS 204 details assignments at Division and Group levels and is part of the IAP.
- Multiple pages/copies can be used if needed.
- If additional pages are needed, use a blank ICS 204 and repaginate as needed.

ASSIGNMENT LIST (ICS 204)

1. Incident Name: SR-530 Slide, #14-0995	2. Operational Period: Date From: 03-30-2014 Date To: 03-30-2014 Time From: 0600 Time To: 2000	3. Branch: Division: WEST Group: A/B																																																																																					
4. Operations Personnel: Name _____ Contact Number{s} _____ Operations Section Chief: <u>Karrie Stevens</u> Division Supervisor: <u>Mike Moore / Doug Bleeker / Steve Mason</u> FEMA Liaison: <u>Les Crews</u>																																																																																							
5. Resources Assigned: <table border="1" style="width: 100%; border-collapse: collapse;"> <thead> <tr> <th style="width: 30%;">Resource Identifier</th> <th style="width: 20%;">Leader</th> <th style="width: 10%;">Units</th> <th style="width: 20%;">Contact (eg., phone, pager, radio frequency, etc.)</th> <th style="width: 20%;">Reporting Location, Special Equipment and Supplies, Remarks, Notes, Information</th> </tr> </thead> <tbody> <tr><td>Technical Rescue TR31 (County)</td><td></td><td style="text-align: center;">8</td><td></td><td></td></tr> <tr><td>Technical Rescue TR21 (County)</td><td></td><td style="text-align: center;">5</td><td></td><td></td></tr> <tr><td>Technical Rescue TR 1 (County)</td><td></td><td style="text-align: center;">5</td><td></td><td></td></tr> <tr><td>Hazmat HM 71 - Dist#?</td><td></td><td></td><td></td><td></td></tr> <tr><td>Falling Module 0-15</td><td>Dan Heidal/Tom Smith</td><td style="text-align: center;">2</td><td></td><td></td></tr> <tr><td>Falling Module 0-14</td><td>Shirley Todd/Kevin Roy</td><td style="text-align: center;">2</td><td></td><td></td></tr> <tr><td>Tech Specialists</td><td></td><td style="text-align: center;">2</td><td></td><td></td></tr> <tr><td>Oso Engine 37</td><td>Blankenship</td><td style="text-align: center;">2</td><td></td><td></td></tr> <tr><td>Oso Aid 37</td><td>Sandy Langdon</td><td style="text-align: center;">2</td><td></td><td></td></tr> <tr><td>US&R Specialist</td><td>John Bentley</td><td style="text-align: center;">1</td><td></td><td></td></tr> <tr><td>National Guard</td><td></td><td></td><td></td><td></td></tr> <tr><td>Search and Extraction</td><td>Lt. Col. Puckett</td><td style="text-align: center;">50</td><td></td><td></td></tr> <tr><td>Fatality Search and Recovery</td><td>Cpt. Sanders</td><td style="text-align: center;">11</td><td></td><td></td></tr> <tr><td>BLS A68</td><td>Gleason/Murphy</td><td style="text-align: center;">2</td><td></td><td></td></tr> <tr><td>ALS M47</td><td>Jenness/Bean</td><td style="text-align: center;">2</td><td></td><td></td></tr> <tr><td>Volunteer Rescue Group Sup.</td><td>Chief 37 Harper/Doug Bleeker</td><td style="text-align: center;">1</td><td style="text-align: center;">509 290-0782</td><td></td></tr> </tbody> </table>		Resource Identifier	Leader	Units	Contact (eg., phone, pager, radio frequency, etc.)	Reporting Location, Special Equipment and Supplies, Remarks, Notes, Information	Technical Rescue TR31 (County)		8			Technical Rescue TR21 (County)		5			Technical Rescue TR 1 (County)		5			Hazmat HM 71 - Dist#?					Falling Module 0-15	Dan Heidal/Tom Smith	2			Falling Module 0-14	Shirley Todd/Kevin Roy	2			Tech Specialists		2			Oso Engine 37	Blankenship	2			Oso Aid 37	Sandy Langdon	2			US&R Specialist	John Bentley	1			National Guard					Search and Extraction	Lt. Col. Puckett	50			Fatality Search and Recovery	Cpt. Sanders	11			BLS A68	Gleason/Murphy	2			ALS M47	Jenness/Bean	2			Volunteer Rescue Group Sup.	Chief 37 Harper/Doug Bleeker	1	509 290-0782		
Resource Identifier	Leader	Units	Contact (eg., phone, pager, radio frequency, etc.)	Reporting Location, Special Equipment and Supplies, Remarks, Notes, Information																																																																																			
Technical Rescue TR31 (County)		8																																																																																					
Technical Rescue TR21 (County)		5																																																																																					
Technical Rescue TR 1 (County)		5																																																																																					
Hazmat HM 71 - Dist#?																																																																																							
Falling Module 0-15	Dan Heidal/Tom Smith	2																																																																																					
Falling Module 0-14	Shirley Todd/Kevin Roy	2																																																																																					
Tech Specialists		2																																																																																					
Oso Engine 37	Blankenship	2																																																																																					
Oso Aid 37	Sandy Langdon	2																																																																																					
US&R Specialist	John Bentley	1																																																																																					
National Guard																																																																																							
Search and Extraction	Lt. Col. Puckett	50																																																																																					
Fatality Search and Recovery	Cpt. Sanders	11																																																																																					
BLS A68	Gleason/Murphy	2																																																																																					
ALS M47	Jenness/Bean	2																																																																																					
Volunteer Rescue Group Sup.	Chief 37 Harper/Doug Bleeker	1	509 290-0782																																																																																				
6. Work Assignments: Locate and search for victims within Grids 6-8. Coordinate canine search needs with East Branch and Search group. Search assigned grids and mark target search areas using GPS Longitude/Latitude coordinates. Report in DD MM SS.SS using WGS84 Coordinate System																																																																																							
7. Special Instructions: Report fatalities to the Communication Unit at 425 248-7635. Mark with GPS Latitude/Longitude and call in immediately. Report in DD MM SS.SS using WGS84 Coordinate System. Mandatory decontamination & hand washing. Procedure when locating overhead transformer: If possible, identify & immediately notify the onsite hazmat techs. The hazmat techs will determine leaks. If non-PCB transformer identified, move without touching transformer body with any equipment. Bag all transformers. Notify Snohomish County PUD contact Bob Holt. Office: 360 435-7501 Cell: 425 344-2472 Ground Support assigned to Group A/B Brian Bailey 765-914-6063																																																																																							
8. Communications (radio and/or phone contact numbers needed for this assignment): Name/Function _____ Prima[Y Contact indicate cell, 12 pager, or radio {frequency/system/channel}] _____ / See Communications Plan																																																																																							
9. Prepared by: Name: <u>M. Coleman</u> Position/Title: RESL Signature: <u>rya.711_a a/_</u> , CS 204 IAP Page _____ Date/Time: 03-29-2014, 1700																																																																																							

ASSIGNMENT LIST (ICS 204)

1. Incident Name: SR-530 Slide, #14-0995	2. Operational Period: Date From: 03-30-2014 Date To: 03-30-2014 Time From: 0600 Time To: 2000	3. Branch: <h3 style="text-align: center;">ROAD</h3>																																																												
4. Operations Personnel: Name _____ Contact Number(s) _____ Operations Section Chief: <u>Mike Asher / Dave Nalle</u> Branch Director: <u>Gary Ward <WSDOT></u> Division/Group Supervisor: _____		Division: Group: HWY 530 Staging Area: Reporting Location, _____																																																												
5. Resources Assigned: <table border="1" style="width: 100%; border-collapse: collapse; margin-top: 5px;"> <thead> <tr> <th style="width: 25%;">Resource Identifier</th> <th style="width: 25%;">Operator</th> <th style="width: 10%;">Quantity</th> <th style="width: 25%;">Contact (e.g., phone, pager, radio frequency, etc.)</th> <th style="width: 15%;">Special Equipment and Supplies, Remarks, Notes, Information</th> </tr> </thead> <tbody> <tr> <td>Supervisor</td> <td>John Tate</td> <td style="text-align: center;">1</td> <td></td> <td>Division A/B</td> </tr> <tr> <td>Bobcat-E-50 Mini Excavator (WSDOT)</td> <td>Merlin Cook</td> <td style="text-align: center;">1</td> <td></td> <td>Division A/B</td> </tr> <tr> <td>Excavator Case CX 135SR (Rental)</td> <td>Lee Haugstad</td> <td style="text-align: center;">1</td> <td></td> <td>Division A/B</td> </tr> <tr> <td>Excavator-Hitachi US135 (Rental)</td> <td>Al Hendrickson</td> <td style="text-align: center;">1</td> <td></td> <td>Division A/B</td> </tr> <tr> <td>Spotter</td> <td>Mike Reitz</td> <td style="text-align: center;">1</td> <td></td> <td>Division A/B</td> </tr> <tr> <td>Spotter</td> <td>Jim Winter</td> <td style="text-align: center;">1</td> <td></td> <td>Division A/B</td> </tr> <tr> <td>Spotter</td> <td>Solwold</td> <td style="text-align: center;">1</td> <td></td> <td>Division A/B</td> </tr> <tr> <td>Spotter</td> <td>Dishong</td> <td style="text-align: center;">1</td> <td></td> <td>Division A/B</td> </tr> <tr> <td>DOT Safety Officer</td> <td>Sue Tellesbo</td> <td style="text-align: center;">1</td> <td></td> <td>Division A/B</td> </tr> <tr> <td>DOT Safety Officer</td> <td>Mike Bresse</td> <td style="text-align: center;">1</td> <td></td> <td>Division A/B</td> </tr> <tr> <td> </td> <td> </td> <td> </td> <td> </td> <td> </td> </tr> </tbody> </table>			Resource Identifier	Operator	Quantity	Contact (e.g., phone, pager, radio frequency, etc.)	Special Equipment and Supplies, Remarks, Notes, Information	Supervisor	John Tate	1		Division A/B	Bobcat-E-50 Mini Excavator (WSDOT)	Merlin Cook	1		Division A/B	Excavator Case CX 135SR (Rental)	Lee Haugstad	1		Division A/B	Excavator-Hitachi US135 (Rental)	Al Hendrickson	1		Division A/B	Spotter	Mike Reitz	1		Division A/B	Spotter	Jim Winter	1		Division A/B	Spotter	Solwold	1		Division A/B	Spotter	Dishong	1		Division A/B	DOT Safety Officer	Sue Tellesbo	1		Division A/B	DOT Safety Officer	Mike Bresse	1		Division A/B					
Resource Identifier	Operator	Quantity	Contact (e.g., phone, pager, radio frequency, etc.)	Special Equipment and Supplies, Remarks, Notes, Information																																																										
Supervisor	John Tate	1		Division A/B																																																										
Bobcat-E-50 Mini Excavator (WSDOT)	Merlin Cook	1		Division A/B																																																										
Excavator Case CX 135SR (Rental)	Lee Haugstad	1		Division A/B																																																										
Excavator-Hitachi US135 (Rental)	Al Hendrickson	1		Division A/B																																																										
Spotter	Mike Reitz	1		Division A/B																																																										
Spotter	Jim Winter	1		Division A/B																																																										
Spotter	Solwold	1		Division A/B																																																										
Spotter	Dishong	1		Division A/B																																																										
DOT Safety Officer	Sue Tellesbo	1		Division A/B																																																										
DOT Safety Officer	Mike Bresse	1		Division A/B																																																										
6. Work Assignments: Support recovery efforts. Install silt fence.																																																														
7. Special Instructions: Report fatalities to the Communication Unit at 425 248-7635. Mark with GPS Latitude/Longitude and call in immediately. Report in DD MM SS.SS using WGS84 Coordinate System. Mandatory decontamination & hand washing. Procedure when locating overhead transformer: If possible, identify & immediately notify the onsite hazmat techs. The hazmat techs will determine leaks. If non-PCB transformer identified, move without touching transformer body with any equipment. Bag all transformers. Notify Snohomish County PUD contact Bob Holt. Office: 360 435-7501																																																														
8. Communications (radio and/or phone contact numbers needed for this assignment): Name/Function _____ Primary Contact: indicate cell, pager, or radio (frequency, channel) _____ / _____ _____ / _____ See Communications Plan _____ / _____ _____ / _____																																																														
9. Prepared by: Name: M. Coleman Position/Title: RESL Signature: <i>fY/ [Signature]</i>																																																														
ICS 204	AP Page _____	Date/Time: 03-29-2014, 1023																																																												

ASSIGNMENT LIST (ICS 204)

1. Incident Name: SR-530 Slide, #14-0995	2. Operational Period: Date From: 03-30-2014 Date To: 03-31-2014 Time From: 2000 Time To: 0800	3. Branch: NIGHT Division: Group: Staging Area:		
4. Operabns Personnel: <u>Name</u> _____ <u>Contact Number(s)</u> _____ Operations Section Chief: Mike Asher _____ Branch Director: <u>Lt. Ashton</u> _____ Notes: : Available 12er 12hone 24 / 7		Reporting Locabn, Special Equipment and Supplies, Remarks, Notes, Information		
5. Resources Assigned:		Contact (e.g., phone, pager, radio frequency , etc.)		
Resource Identifier	Leader			
Engine 94				East
Rescue 49				West
3 Light Plants				
2 Portable Light Plants				
Security	Andy Kahler	1		East 2000-2200
Security	Scott Stich	1		East 1800-0600
Security	Mosalsky	1		East 1800-0600
6. Work Assignments: <u>West Side</u> Position on Skaglund Hill. Monitor for activity within the debris field. East Side Monitor water level Monitor for activity within the debris field				
7. Special Instructions: Report fatalities to the Communication Unit at 425 248-7635. Mark with GPS Latitude/ ongitude and call in immediately. Report in DDMM SS.SS using WGS84 Coordinate System. Mandatory decontamination & hand washing.				
8. Communications (radio and/or phone contact numbers needed for this assignment): Name/Function _____ Prima[Y Contact: indicate cell, 12ager, or radio (freauency/s:istem/channel)} _____ _____ / _____ _____ / _____ See Communications Plan _____ _____ / _____ _____ / _____				
9. Prepared by: Name: M. Coleman		Position/Title: RESL Signature: <i>tjY'</i> ? (k r// C(//_		
ICS 204	AP Page _____	Date/Time: 03-29-20 1800		

AIR OPERATIONS SUMMARY

Prepared By: Tom Griffith

Prepared Date: 03/29/2014

Prepared Time: 1700 hours

1. INCIDENT NAME: SR 530 Slide	2. OPS PERIOD DATE: Sundav March 30,2014	START TIME: 0800	END TIME: 1900	SUNRISE: 0648 hours	SUNSET: 2006 hours
-----------------------------------	---	---------------------	-------------------	------------------------	-----------------------

3. REMARKS (Safety Notes, Hazards, Air Operations Special Equipment, etc.): <i>***Tier I TFR extended to Monday 3/31/2014 at 1000 hours.</i>	4. READY ALERT AIRCRAFT: None	5. TFR: Radius 8 miles, 6000 feet (Until 3/31/14 1000 hours)
---	----------------------------------	--

6. PERSONNEL	NAME	PHONE #	7. FREQUENCIES	AM	FM	8. FIXED-WING Avail/ Type/ Make-Model/ N#/ Base
Air Branch	T. Griffith		Air/Air	123.1		
Dep. Air Branch	B. Henry		Air/Branch	123.1		
Dep. Air Branch	J. Woodbury		Air/Tactical	123.1		
Air Coordinator	W. Quistorf		Air/Tactical	123.1		
Air Base Manager	A. Collins		Air/Tactical		155.415 D	
Air Tactical Grp	D. Ellis		Coordination	PSOPS N3		
Helo Sup. Spec	K. Dean					
Helo Sup. Spec	S. Berry					

FAA N#	T y	MAKE/ MODEL	BASE	AVAIL	START	REMARKS	FAA N#	T y	MAKE/MODEL	BASE	AVAIL	START	REMARKS
WAANG	H	UH-60	Arlington	Yes	0800	Cougar 68							
WAANG	H	UH-60	Arlington	Yes	0800	Cougar 77							
KCSO	H	Bell407	Arlington	Yes	0900	Guardian I							

TYPE/FUNCTION	NAME OF PERSONNEL OR CARGO (if applicable) or instructions for tactical aircraft	MISSION START	FLY FROM	FLY TO

INCIDENT RADIO COMMUNICATIONS PLAN		Incident Name - " 530 SLIDE #14-0995			Date/Time Prepared - - - - - 1700		Operations Period Date/Time c ALL SHIFTS		
Function	Channel Remarks Name! Radio Svstem	Assignment Trunked	RX Freq N/W	RX Tone/NAC	TX Freq N/W	Tx Tone/NAC	Mode		
ACTIC-AL	SNO FT7	West Tactical	TUNIR 800					NO f T7 Patched to MA SNO-1	
CTIC L	SNO FT8	Tactical I	UNI 800					IO FT8 Patched to MA SNO-2	
MMAND	CALL	mand	UNKED 81						
Out	TAC-4	tics							
LOC (, ..., 1:	ST OPS 1 •	Ir Scene	stnu 800					L i of sight radio comms NOT MONITORED.	
GROUND o AIF	PSOPSN3	ALL	TRUNKED 800					(found to air. Follow procedures below	
A;R -to- Air	123.1-AIR	AIR-AIR	123.100-AM		123.100-AM			AIR to AIR coordination	
SAR VHF	SNO SAR	Gr>und SAR Air to Gnd	15 i.415 N	127 3	127.3	127		> County SAR teams also local air to und operations coodination	
S. R VHF	SAR GRANITE:	d SAC	1	127.	1210	1035		> County SAR teams	
S, R VHF	SAR DAR	1d SAR	55	127 =	1210 N	114.8		> County SAR team	
Federal - Local Interop	SNO OPS9 / NTEROP 3	federal, Loca•						L tal Public Safey/EM r with F£>tial Resources IW Nt 1 Kl::> Patch H1rouQh SNO PAC	
Backup Alternate	SNO FT6	OPS	'RUNKED 800					f needed call Arlington COMMS at 425-248-7635	
Air operations procedures									
"n aircraft may initiate contact with ground team on either West Tactical (SNO FT7) or East Tactical (SNO FT8) to cone ms and comms with forward > ervers									
>und will call aircraft on PSOPSN3 to establsh contact									
S1 OP 1 i i ho• range, non-monitored radio to radio channel for co1 inating loca oo 1ra:011s T1yb ro1 nd in mul 1::>• banks in 800 MHz Rad1									
Prepared By (Communications Unit) DickWhit;iker (COML)				Incident Location OSO,WA County State Latitude Longitude					

ly lists to show four digits after the decimal place, 1011oweC1 by either an "N" or a "W", ClepenCllng on whether the frequency narrow or wide band. Mode refers to either "A" or "D" indicating analog or digital (e.g. Project 25) or "M" indicating mixed mode. All channels are shown as if programmed in a control station, mobile or portable radio. Repeater and base stations must be programmed with the Rx and Tx reversed.

NCIDENT RADIO COMMUNICATIONS PLAN

INCIDENT NAME SR 530 Slide WHITEST	GPS DATUM / FORMAT WGS 84 and US National Grid	DATE/TIME PREPARED 29 Mar 2014/ 15:00 PST/ 22:00 Z	OPERATIONAL PERIOD-DATE/TIME 30 March 2014- 06:00 through 31 March 2014 - 06:00
---	--	---	--

SYSTEM / CACHE	ZONE	CH	DISPLAY	FUNCTION	REMARKS
FEMA US&R/UHF	B	15	815	US&R Arhngton Cmd Net	Arlington repeater linked to Darrington – For use in Arlington area
FEMA US&R/UHF	B	8	88	US&R Darrington Cmd Net	Darrington repeater linked to Arlington – For use in Darrington area
MSAT	-	-	USAR-1	Command Net	As needed
FEMA US&R/UHF	B	12	812	FEMA IST logistics	Non-repeated local FEMA IST communications - Arlington or Darrington
FEMA US&R/UHF	B	5	85	WA-TF1 Tactical Rpt	WA-TF1 Wide Area Repeater East & West Divisions Darrington, WA
FEMA US&R/UHF	B	3	83	WA-TF1 Tactical West	WA TF-1 West Div 3, 4, 5 Non-repeated
FEMA US&R/UHF	B	4	84	WA-TF1 Tactical East	WA TF-1 East Div 1,2 Non-repeated
FEMA US&R/UHF	C	16	C/16	Fed Convoy	Shared by all US&R TF's
FEMA US&R/UHF	P	10	IR-18	Fed Interop	Interop: Fed-Fed & Fed-Local- NO UHF assets deployed by local public safety
FEMA US&R/UHF	P	9	IR-17	Fed Interop	US&R Nat'l Guard Interop
FEMA US&R/UHF	O	8	UTAC 430	Interop	As Needed
FEMA US&RNHF/AM			123.1 MHz VHF/AM	SAR Air to Ground	See Air Ops Summary ICS 220.

Remarks:

Refer to human remains as "HR" or "Hotel Romeo" during this event.

Aircraft may request DD MMSS Format.

Only the White ST Comm. Unit can assign/reassign Channels and/or Frequencies.

USARI is also used as a combination Command Support Net until first Task Force engages incident.

CS-205-U Billy Freeman, FEMA US&R 0-COML White IST

h
(-.)

MEDICAL PLAN	1. INCIDENT NAME	2. DATE PREPARED	3. TIME PREPARED	4. OPERATIONAL PERIOD
	SR 530 Slide	03/29/14	1730	3/30/14 0600 - 3/31/14 0600

5. INCIDENT MEDICAL AID STATIONS				
MEDICAL AID STATIONS	LOCATION			PARAMEDICS
				YES NO

6. TRANSPORTATION				
A. Air Ambulances				
NAME	ADDRESS	PHONE	PARAMEDICS	
			YES	NO
Multiple Through Air Operations Branch			x	
B. Ground Ambulances				
A55 (Index)	West Branch	FIRETAC 7		x
M47 (Arlington Fire)	West Branch	FIRETAC 7	x	
M24 (Mukilteo)	East Branch	FIRETAC 7		x

7. HOSPITALS								
NAME	ADDRESS	TRAVEL TIME		PHONE	HEUPAD		BURN CENTER	
		AIR	GRND		YES	NO	YES	NO
Cascade Valley Hospital (West Branch and base)	330 S Stillaguamish Av, Arlington, WA 98223 1415 E. Kincaid St.		20	360-435-9677		X		X
Skagit Valley Hospital (East Branch)	Mt. Vernon, WA 48° 25' 5"N 122° 19' 28"W	15	80	360-424-41 11	X <small>small</small>	X <small>H-60</small>		X
Providence Medical Ctr (level 2 trauma)	1321 Colby Ave, Everett, WA 47° 59' 58"N 122° 12' 21"W	10	45	425-261-2000	X <small>small</small>	X <small>H-60</small>		X
Harborview Medical Center (level 1 trauma)	325 9th Ave., Seattle, WA 47° 36' 11"N 122° 19' 30"W	25	90	858-939-3420	X		X	
My Pet Emergency Center (veterinary)	14434 Avon Allen Road Mounty Vernon, WA		43	877-848-5918		X		X

8. MEDICAL EMERGENCY PROCEDURES
1. Upchannel all critical medical emergencies in the debris field to the Division Supervisor level. The affected Division Supervisor is responsible for coordinating response to medical emergencies in the division.
 2. For medical emergencies in the East Branch, WA-TFI has 2 emergency physicians and 4 paramedics available. EMS units are available in Darrington via 9-1-1.
 3. For canine emergencies contact the Medical Unit.
 4. Report all injuries and illnesses, regardless of severity, to the medical unit.
 5. Medical Unit is available by telephone at 713-208-7168.
 6. In the event of a critical patient requiring air evacuation, contact Air Branch on PSOPN3.
 7. Air evacuation will dispatch the appropriate rescue aircraft. The medical provider with the patient with the highest level of medical certification will determine patient destination. In most cases, the rescue helicopter transport the patient to Arlington Airport. Air Branch will rescue both ground ALS and Northwest Airlift Air Ambulance (Rotary Wing) to meet the rescue helicopter at Arlington airport. The paramedic in the rescue helicopter may elect to transport directly to Harborview Hospital (level 1 trauma).

INJURY REPORTING PROCEDURES

NATURE OF INJURY _____

LOCATION OF PATIENT _____

TRANSPORTATION REQUESTED BY: AIR_ GROUND_

POINT OF PICKUP _____

LAT _____ LONG _____

PATIENT UNIT ID _____

REMINDER: DO NOT GIVE PT NAME OVER RADIO

IS AN EMT WITH PATIENT: YES ___ NO ___

AGE _____

SEX: MALE_ FEMALE will _____

ALL EMERGENCIES---Secure the area and identify witnesses for later investigation. Keep an accurate log of events.

19. PREPARED BY (MEDICAL UNIT LEADER) **Richard Bradley. MD** *[Signature]*

110. REVIEWED BY (SAFETY OFFICER) **Ray Hershey**

ICS 206 8-78

Additional Medical Personnel

Dr. Larry Woodard	IST Medical Officer	East Branch
Capt. Shaun Waxwell	EMS Manager	
Hansen	Paramedic	West Branch
Hoover	Paramedic	West Branch
Stiesel	Paramedic	West Branch
Kristin Cox + IO	CISMT Leader	

West - ICP
Phone List

First	Last	Agency	Position	Phone
Mike	Asher	WIIMT4	OSC	
Dave	Nalley	WIIMT4	OSC-T	
Sgt.	Mclaughlin	SNO COSO	Security Supv East	
Det. Dave	Bileau	SNO COSO	Security Supv West	
Scott	Parker	SNO COSO	Branch Dir.	
Steve	Westlake	Eastside Fire	OSC-T	
Lt. Ron	Palmer	SNO COSO	Branch Dir.	
Lt. Jeff	Beazizo	WSP	DIVS	
Karrie	Stevens	WIIMT4	OSC	
Mike	Moore	WIIMT4	DIVS	
Doug	Bleeker	WIIMT4	DIVS West	
Steve	Mason	NWIMT	DIVS West	
Steve	Harris	WIIMT4	Group Supv. East	
Richard	Parrish	WIIMT4	Group Supv. East	
Doug	Pressel	WATF ■	Search Mgr.-East	
Owen	Carter	SNO CO PUB WK	Dep.Branch Dir	
Gary	Ward	WSDOT	Branch Dir.-Roads	
Dean	Warner	DNR	Group Supv.	
Lt. Tony	Aston	SNO COSO	Branch Dir.	
Larry	Nickey	WIIMT4	IC	
Pat	Halford	WIIMT4	IC	

EAST - Darrington
FAX #:360-436-1309

NAME	POSITION	AGENCY	CELL PHONE
GREG SIELOFF	DEP ICEAST	LYNNWOOD FD	
BRYAN SWANBERG	LOG Chief	CLALLAM CO FD 3	
AMY LUCAS	GIS	TOWN OF DARRINGTON	
JAY TOMKUS	STAFF	CONGRESSWOMAN DELBENE	
JULIEN LOH	STAFF	CONGRESSWOMAN DELBENE	
VIET SHELTON	STAFF	CONGRESSWOMAN DELBENE	
ROBERT KNOLL	STAFF	CONGRESSWOMAN DELBENE	
JOE DOWNES	STAFF	SENATOR CANTWELL	
SALLY HINTZ	STAFF	SENATOR CANTWELL	
SCHUYLER HOSS	STAFF	GOVERNOR ENSLEE	
PETE SELIVG	LOGISTICS	TEAM 4	
ADRIENNE HALL	LOGISTICS	FOREST SERVICE VOLUNTEER	
JERRY ZIMMERMAN	LOGISTICS	FOREST SERVICE VOLUNTEER	
SHELLIE JONES	LOGISTICS	FOREST SERVICE VOLUNTEER	
CINDY WHITE	PUBLIC AFFAIRS	FOREST SERVICE VOLUNTEER	
KRIS RIETMAN	PUBLIC AFFAIRS	WSP	
DAVE HESBURN	GROUND SUPPORT	TEAM4 INCIDENTMANAGEMENT	
JASON BIERMAN	LIASON	SNO COUNTY DEM	
LANE STUART	LIASON	RED CROSS	
DAN RANKIN	MAYOR	TOWN OF DARRINGTON	
ANDY KAHLER	SECURITY	SNOHOMISH COUNTY SHERIFF	
DANIEL G. GOOD	COORDINATION	EMERGENCY SERVICES COORDINATING AGENCY	

LOGISTICS MESSAGE

SHOWER HOURS

0500 - 1000

1800 - 2200

SHOWERS ARE LOCATED IN NORTHEAST CORNER OF SCHOOL
COMPOUND

MEALS

ARLINGTON - RED CROSS

BREAKFAST 0500-0900

LUNCH 1100-1400

DINNER 1700-2100

DARRINGTON - DNR KITCHEN

BREAKFAST 0530-0900

LUNCH 1100-1400

DINNER 1800-2200

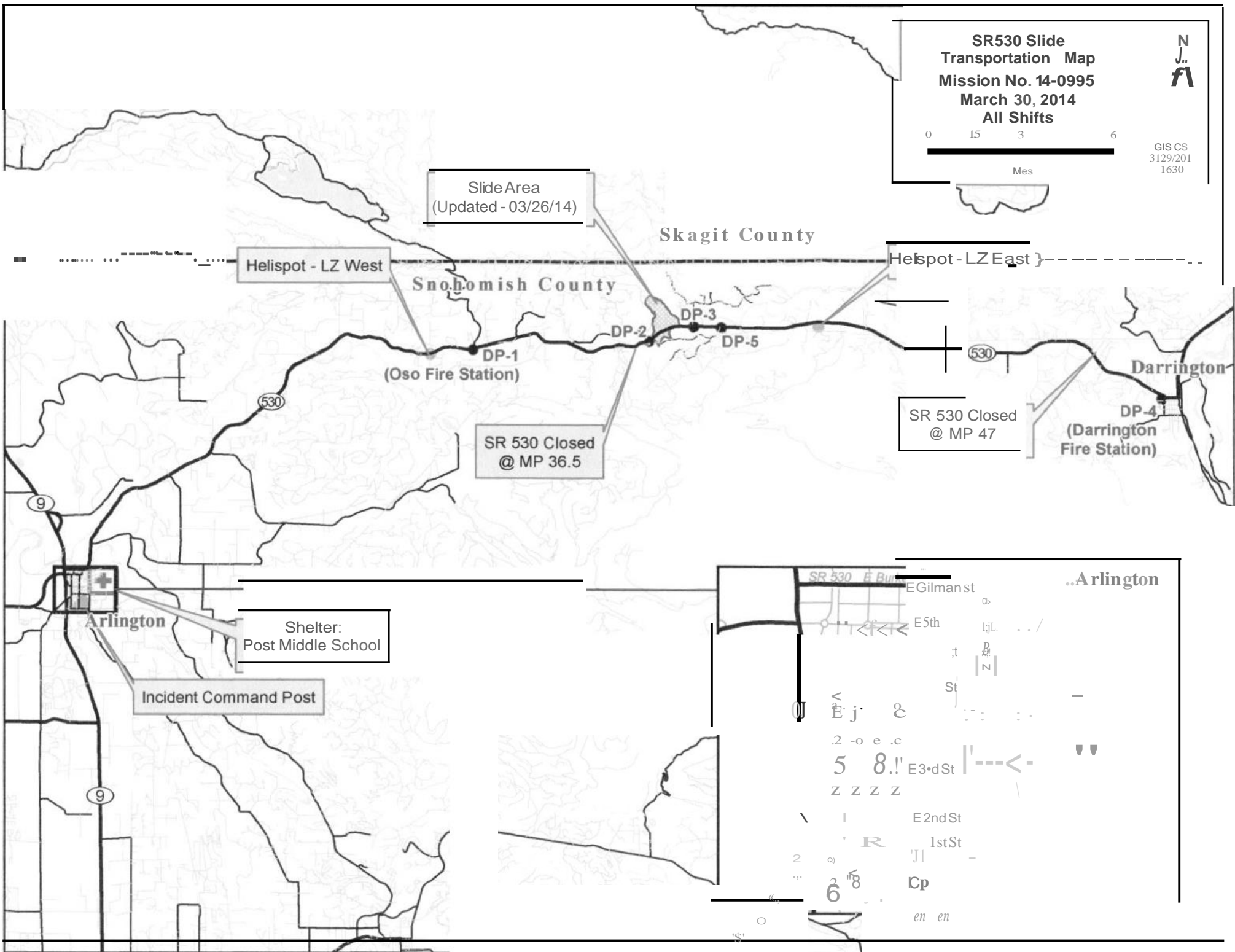
OSO - SOUP KITCHEN

OPEN 24/7

SR530 Slide
Transportation Map
Mission No. 14-0995
March 30, 2014
All Shifts



GIS CS
3129/201
1630



Arlington

Shelter:
Post Middle School

Incident Command Post

..Arlington

SR 530 E Blvd

E Gilman St

E 5th

E 3rd St

E 2nd St

1st St

Cp

en en

(135S.FrenchAvenue)

EHighland Dr

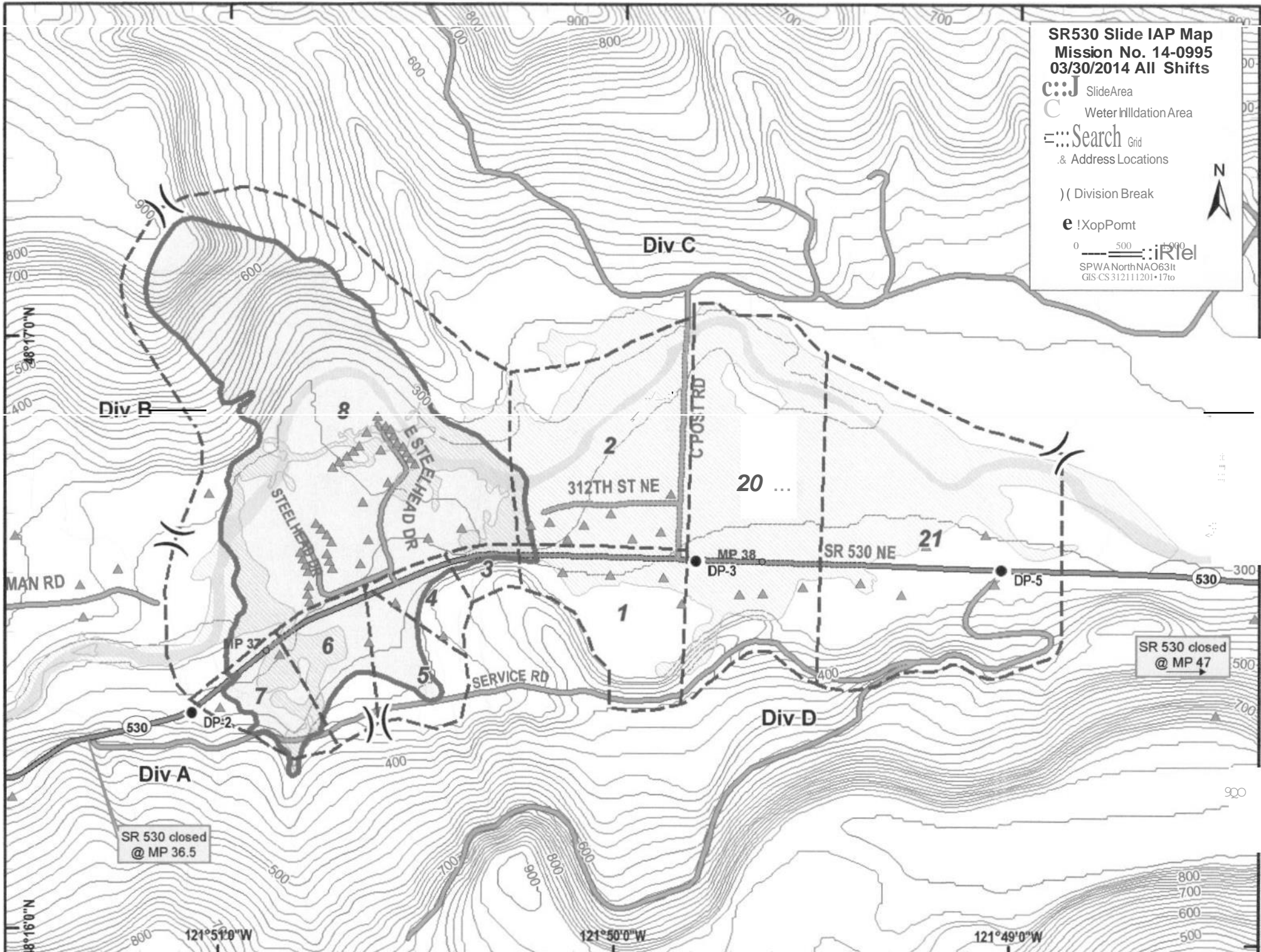
|

—

SR530 Slide IAP Map
Mission No. 14-0995
03/30/2014 All Shifts

- Slide Area
- Water Irrigation Area
- Search Grid & Address Locations
- () (Division Break)
- XopPomt

0 500 1000
SPWA North NAD63
GIS CS 312111201.17to



SR530 Slide 9 Line

Operational Period 03/30/2014 Time and Date Prepared :03/29/2014 2145

s. SERIOUS ACCIDENT OR INCIDENT WITHIN THE INCIDENT

This plan is designed to identify the initial actions that should be taken by the first arriving personnel on a serious accident. This person may be a single resource, engine boss or crew boss. Accidents or incidents within an incident happen rapidly and require good, calm initial decisions to handle the problem while still focusing on the main fire. In the event of an emergency provide the following information to communications. The following checklists also provided in your IRPG on page 49.

1. Declare the nature of the emergency.
 - a. Medical injury/illness or Traumatic injury?
 - b. Is it Life Threatening? Yes or No Time of Injury _____
Details of Injury _____
2. If Life Threatening then request that the designated frequency be cleared for emergency traffic.
Frequency that will be used _____
3. Identify the on-scene Point of Contact (POC) by Resource and Last Name (i.e. POC is TFLD Smith).
On Scene Point Of Contact _____
4. Identify nature of incident, number injured, patient assessment(s) and location (geographic) and GPS coordinates).
Lat _____ Long _____
5. Identify on-scene medical personnel by position and name (i.e. EMT Jones).
Medical# and Names _____
6. Identify preferred method of patient transport _____
7. Request any additional resources and/or equipment _____
8. Document all information received and transmitted on the radio or phone.
9. Identify any changes in the on-scene Point of Contact or medical personnel as they occur.

The *Division Supervisor will assume command* of the accident/incident scene upon arrival.

Consider the Golden Hour Rule as you move about within your divisions.

7. Prepared by (Medical Unit leader): Name: _____ Date: _____

8. Approved by (Safety Officer): Name: _____ Date: _____

ICS 206

AP Page